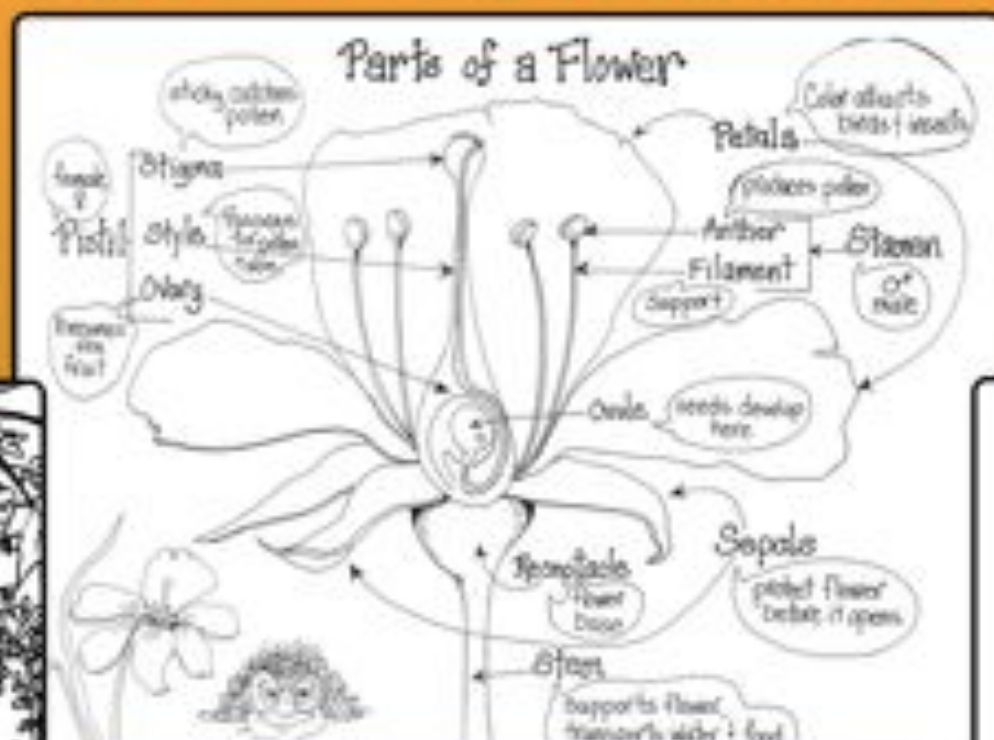


Pollination



MALE & FEMALE PLANTS



SELF POLLINATING FLOWERS

FLOWERS WITH FEMALE & MALE PARTS

Different plants have different methods of pollination

MALE & FEMALE FLOWERS



HINT! HUMAN CAN POLLINATE FLOWERS WHEN NOT ENOUGH INSECTS ARE PRESENT OR WHEN SPECIFIC RESULTS ARE DESIRED

MALE & FEMALE FLOWERS



HINT! PLANT CORN IN BLOCKS TO MAXIMIZE POLLINATION EATES AND THEREFORE HOW MUCH CORN YOU PRODUCE

Pollinators



WIND POLLINATION



HUMANS



BEEES, ANTS & INSECTS



BIRDS

Seed Saving



Cycle

GROW HEALTHY PLANTS
- HEALTHY PLANTS MAKE HEALTHY SEEDS



PICK THE BEST PLANTS FOR SEED
- TO IMPROVE THE QUALITY OF YOUR SEED



PICK SEEDS AT THE RIGHT TIME
- TO IMPROVE GERMINATION RATE

SHARE AND GROW LOCAL SEED
- TO IMPROVE AND DIVERSIFY PRODUCTION



CLEAN SEEDS
- TO PREVENT PEST AND FUNGUS PROBLEMS



GOOD SEED STORAGE
- TO ENSURE YOUR SEEDS LAST A LONG TIME



THE "BITE TEST" FOR DRY SEED

DRY SEEDS - TO STOP SEEDS GOING MOULDY